



Castle Business Park

Stirling

SUITE 3 IS NOW LET
TO PLEIAD DEVICES



TO LET



LOMOND COURT

Castle Business Park, Stirling FK9 4TU

TO LET – NEWLY REFURBISHED SUITES
250 – 641 sq m (2,687 – 6,899 sq ft)

- ▲ High Quality Offices
- ▲ Central Location
- ▲ Stunning Surroundings
- ▲ Dedicated Car Parking

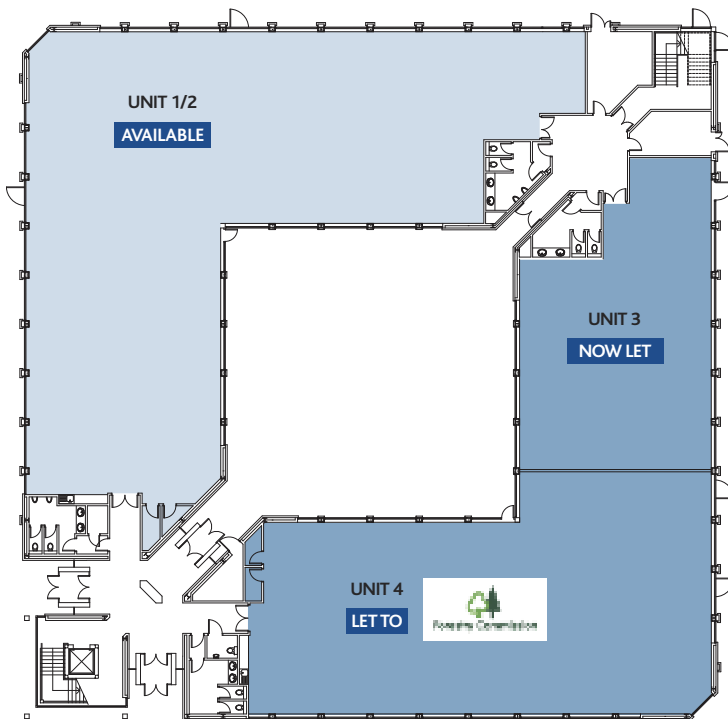
DESCRIPTION

- ▲ Versatile two storey office pavilion arranged around a central courtyard
- ▲ Double height manned reception area
- ▲ Available accommodation has been refurbished to provide high quality offices

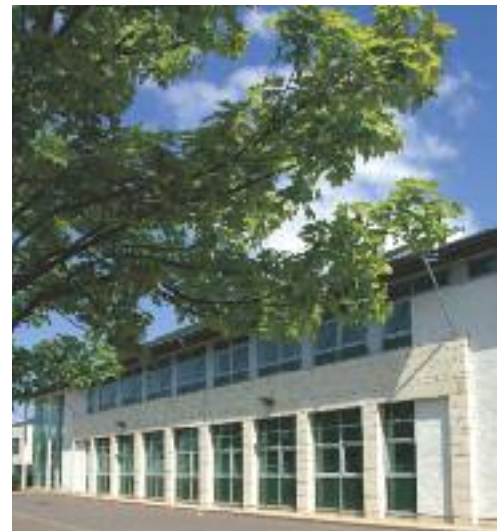


The offices benefit from:

- ▲ Excellent natural light
- ▲ Gas central heating
- ▲ Raised access floor
- ▲ 1:270 sq ft car parking ratio
- ▲ 24 hour access
- ▲ Flexibility for sub-division



Ground floor



ACCOMMODATION

Lomond Court is part let to the **Forestry Commission, Forsyth Business Centres and Pleiad Devices** with the following accommodation remaining available:

Unit 1/2	641 sq m	6,899 sq ft
Total	641 sq m	6,899 sq ft

Unit 1/2 can be split to accommodate requirements from c. 250 sq m (2,687 sq ft).

On site car parking is available at a ratio of 1 space per 25 sq m (270 sq ft).

LEASE TERMS

The premises will be available on new Full Repairing and Insuring terms for a period to be agreed.

VIEWING/INFORMATION

MONTAGU EVANS
 0131 229 3800
 0141 204 2090

JONES LANG LASALLE
 0131 225 8344
 0141 248 6040
joneslanglasalle.co.uk

The Agents for themselves and for the vendors and lessors of this property whose agents they are, give notice that: (1) The particulars are produced in good faith, are set out as a general guide only and do not constitute part of a contract. Intending purchasers or tenants must satisfy themselves independently as to the accuracy of all matters on which they intend to rely, (2) No person in the employment of The Joint Agents has any authority to make or give any representation or warranty whatsoever in relation to this property, (3) The images of the development are correct as at the date of publication. March 2010