



# Castle Business Park

Stirling



TO LET



## STRATHALLAN HOUSE

Castle Business Park, Stirling FK9 4TZ

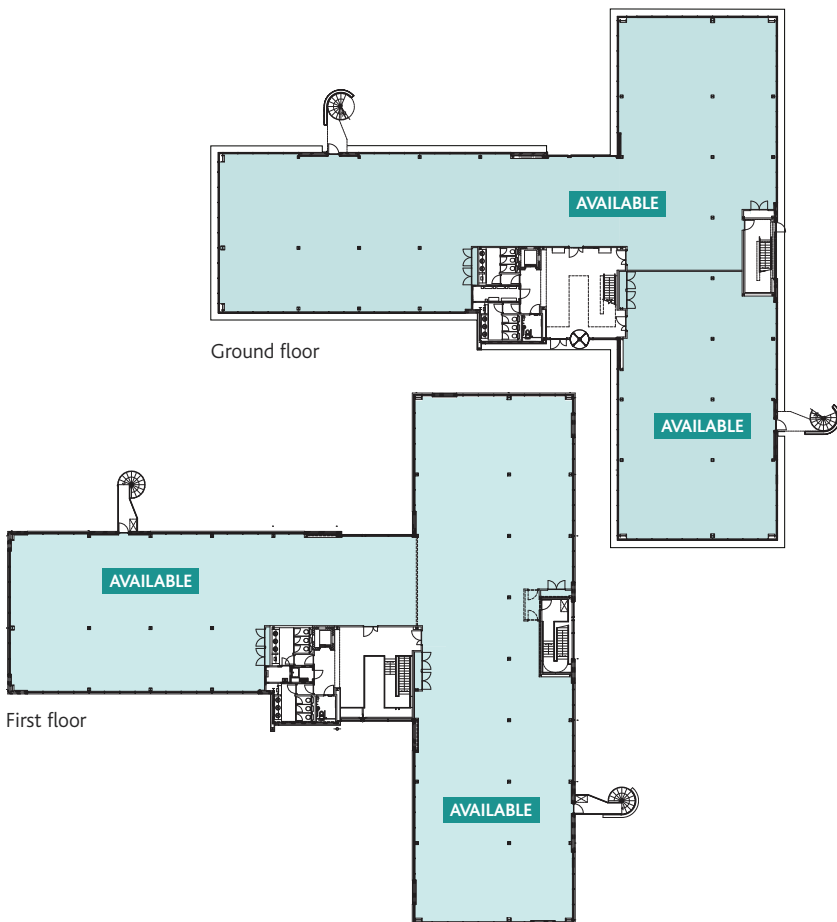
TO LET – GRADE A OPEN PLAN SUITES

Suites from 506.8 sq m (5,455 sq ft) available

- ▲ High Quality Offices
- ▲ Central Location
- ▲ Stunning Surroundings
- ▲ Dedicated Car Parking

# DESCRIPTION

- ▲ Versatile two storey office pavilion
- ▲ Double height reception area
- ▲ Passenger lift to first floor
- ▲ Quality finishes throughout including VRF air conditioning



## The offices benefit from:

- ▲ Excellent natural light
- ▲ VRF Air conditioning
- ▲ Raised access floor
- ▲ 1:270 sq ft car parking ratio
- ▲ 24 hour access
- ▲ Flexibility for sub-division



# ACCOMMODATION

Strathallan House offers the following accommodation:

Ground Floor Suites 1/2	889.5 sq m	9,575 sq ft
First Floor Suite 4	506.8 sq m	5,455 sq ft
First Floor Suite 5/6	749.5 sq m	8,068 sq ft
<b>Total</b>	<b>2,145.8 sq m</b>	<b>23,098 sq ft</b>

It is possible to sub-divide the accommodation to provide suites from approximately 314 sq m (3,383 sq ft).

On site car parking is available at a ratio of 1 space per 25 sq m (270 sq ft).

# LEASE TERMS

The premises are available on new Full Repairing and Insuring terms for a period to be agreed.

# VIEWING/INFORMATION

